
CAR PARKING

There is a 24-hour NCP car park directly below Manchester Central. It has 643 spaces including 15 disabled parking bays and three electric vehicle charging points. There is direct access to Manchester Central by lift, stairs and escalator.

Manchester Central NCP
Lower Mosley Street
Manchester
M2 3GX

Please note that Manchester Central NCP has a **1.98m height limit**.

For exhibitor parking, pre-book on the [NCP website](#) for the car park beneath the venue to receive a 50% discount on the NCP rate for 24-hours.

Please use code MCEXHIB14

TAXIS

Manchester Central works with Manchester's black cab drivers to keep them informed about upcoming events and to make sure they know when we're going to be busy.

We have a dedicated taxi rank at the front of the venue. Black cab taxis are readily available at Manchester Airport and both Piccadilly and Victoria train stations.

TRAVEL

For further travel information, please visit [our website](#) 

See also [Getting here](#) for a map and driving directions.

Manchester is at the heart of a comprehensive motorway network. Manchester's M60 orbital motorway provides easy access from north, south, east and west. Manchester Central's address is Petersfield, Manchester M2 3GX.

**M 6 – FROM SOUTH
STOKE, BIRMINGHAM**

Leave the M6 at junction 19, just after Knutsford Services. Follow the A556 towards Altrincham and pick up the M56 towards Manchester Airport. Follow the motorway onto the A5103 (Princess Parkway), then follow signs for Manchester Central, Petersfield.

**M 6 – FROM NORTH
PRESTON, CARLISLE**

Leave the M6 at junction 21a for the M62 towards Manchester. At junction 12, join the M602 and continue to the end of the motorway (Regent Road Roundabout, Salford). Follow signs to the city centre along Regent Road, and then to Manchester Central, Petersfield.

**M 62 – FROM WEST
LIVERPOOL**

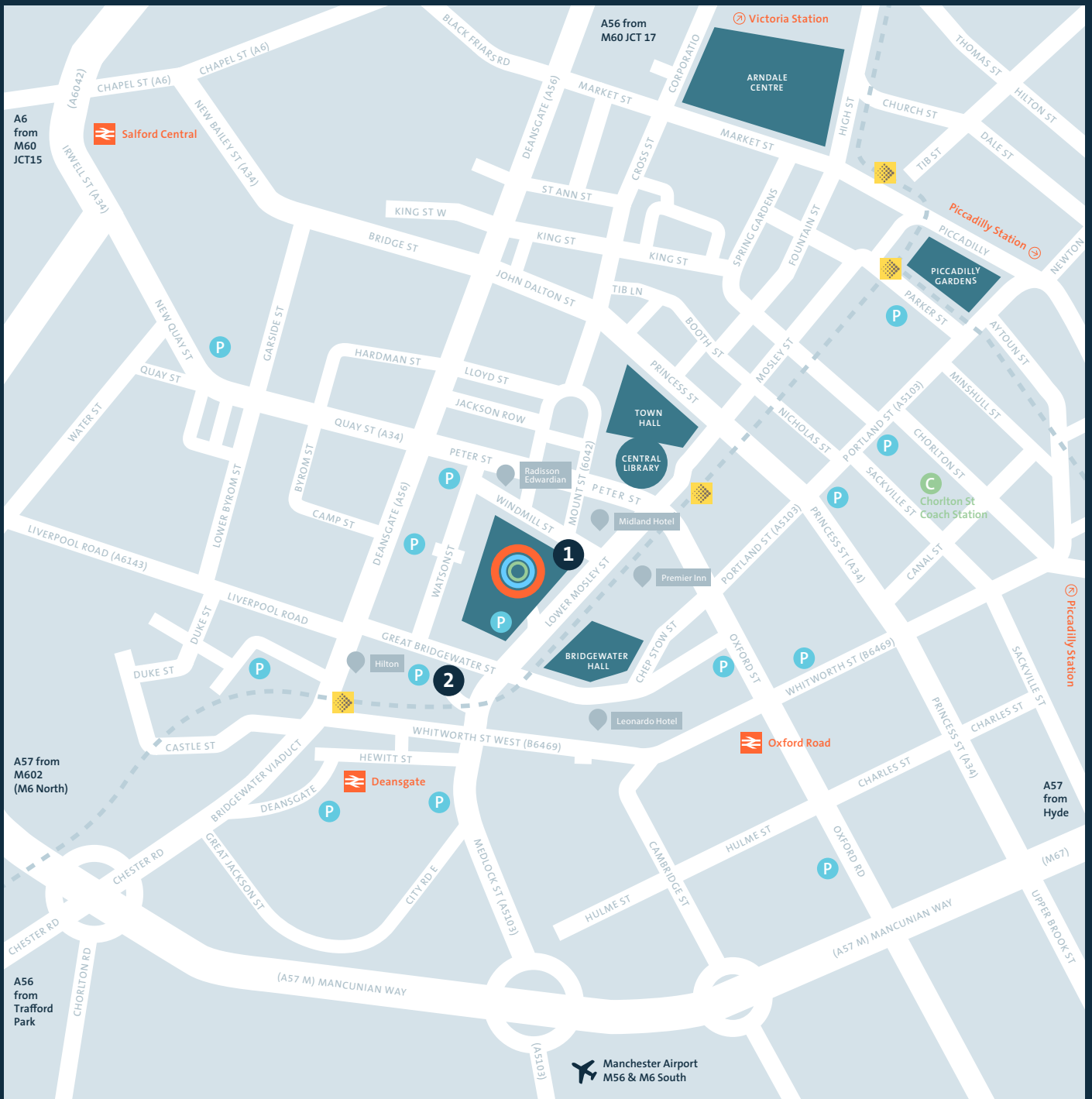
At M62 junction 12, join the M602 and continue to the end of the motorway (Regent Road Roundabout, Salford). Follow signs to the city centre along Regent Road, and then to Manchester Central, Petersfield.

**M 62 – FROM EAST
LEEDS, YORKSHIRE**

At M62 junction 18, join the M60 westbound. Take junction 17 onto the A56 (Bury New Road) and follow signs to the city centre, and then to Manchester Central, Petersfield.

**M 56 – FROM WEST
NORTH WALES,
CHESTER**

Follow the M56 past Manchester Airport. Continue onto the A5103 (Princess Parkway), then follow signs for Manchester Central, Petersfield.



 Parking

 Coach station

 Railway station

 Metrolink station

 Hotel

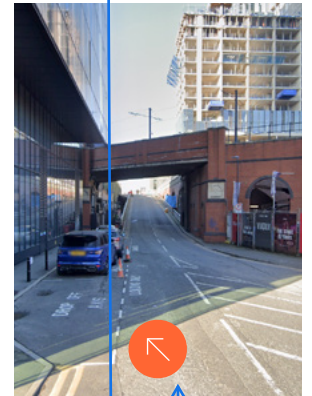
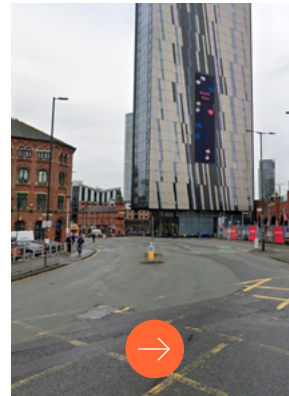
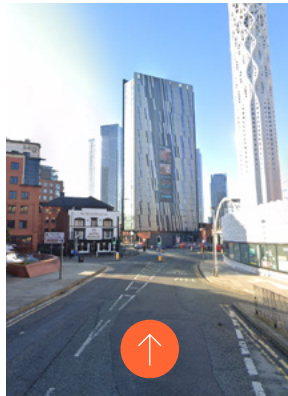
Getting here

Delivery access

CENTRAL HALL 2 &
CHARTER SUITE
ALBION STREET,
M1 5LN



Approaching from Medlock Street



Approaching from Lower Mosley Street

ON APPROACH TO CENTRAL HALL 2 THERE WILL BE SIGNS GUIDING YOU TO THE UNLOADING AREA AND SECURITY STAFF AVAILABLE TO ADVISE WHERE TO PARK YOUR VEHICLE.

UNLOADING FOR SMALL VEHICLES WILL BE VIA FREIGHT DOOR A
UNLOADING FOR LORRIES WILL BE VIA FREIGHT DOOR B

PLEASE ENSURE THAT YOU HAVE PHOTO ID AND BUSINESS CARD FOR ENTRY INTO THE HALL.

SECURITY STAFF WILL GIVE YOU A SET-UP AND DISMANTLING STICKER FOR YOU TO ACCESS THE HALL.

AFTER UNLOADING PLEASE REMOVE YOUR VEHICLE FROM THE UNLOADING AREA AND GO TO THE LOCAL CAR PARK RECOMMENDED BY MANCHESTER CENTRAL.