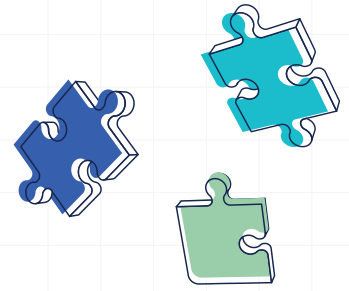
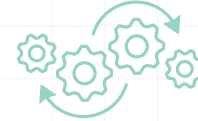


What makes an **effective student leader**?



1 Vision and Goal Orientation

A great student leader possesses a clear vision for their organization or group and sets tangible goals to achieve that vision. They inspire others by communicating a compelling and achievable mission.



4 Adaptability and Resilience

A great student leader is adaptable and resilient in the face of challenges. They remain positive, learn from setbacks, and demonstrate the ability to adjust strategies while maintaining a focus on achieving goals.

2 Effective Communication



Strong communication skills are crucial. A great student leader can articulate ideas, actively listen to others, and foster an open and inclusive environment. Clear communication helps in building trust and understanding among team members.

5 Leading by Example



Effective student leaders model the behavior, work ethic, and values they expect from their team. This creates a culture of accountability and dedication, inspiring others to contribute their best effort.

3 Empathy and Teambuilding



Exceptional student leaders demonstrate empathy by understanding the needs and concerns of their peers. They excel in building a cohesive team, recognizing and leveraging the strengths of each member, fostering collaboration, and creating a positive group dynamic.

